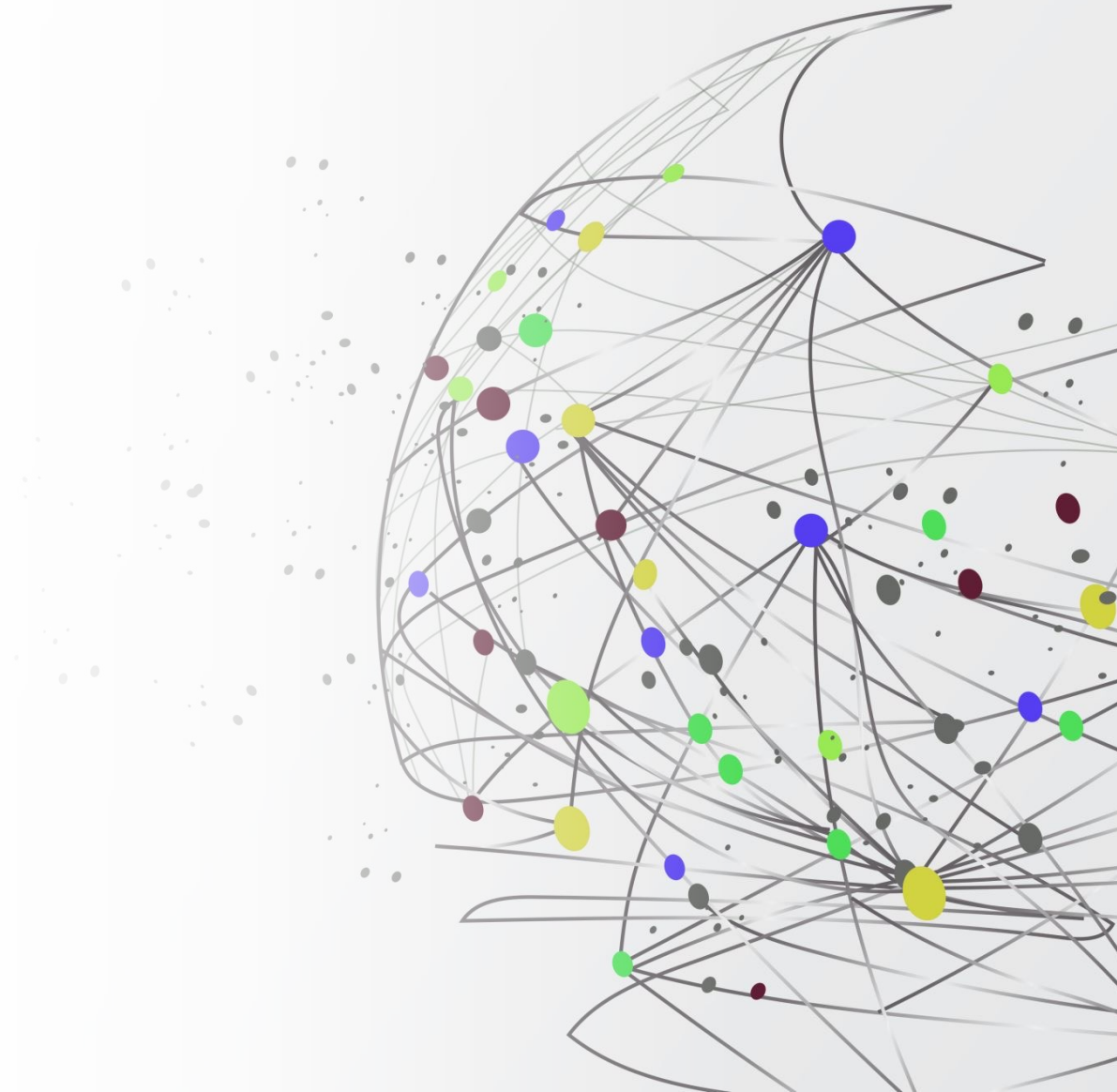




Bioenergetics

Making the world healthy—
physically, mentally,
emotionally, spiritually—
energetically!



Bioenergetics

Bioenergetics is the study of the connection between physical and emotional health. It's all about balance between mind, body, and spirit—our mental, emotional, physical, spiritual, and overall energetic health.

When we are physically healthy, we are able to cope with stress and emotions. When we are emotionally healthy, our bodies are able to better stay in alignment and function properly.

Just like we visit a chiropractor when we need a biomechanical adjustment. We need to energetically align our bodies, too.



Science Supports Bioenergetics

Bioenergetics has been around since the 1950s, in fact—Bioenergetic analysis was developed by Alexander Lowen, M.D. Lowen was a student of Wilhelm Reich, a psychoanalyst who believed and proved that physical ailments were rooted in unconscious psychic conflict.

Lowen expanded on this idea, to include the notion that chronic stress could also lead to mental health issues.



Science of Bioenergetics



As you all know, our bodies are protein making machine. Every cell in our body except red blood cells make proteins. In order for a cell to make proteins, a cell has to be stimulated or regulated.

Our genes are essentially a library of potentials. And the latest research in the field of genetics, says genes don't create disease, it's the environment that signals the gene that that begins to create disease.

In fact, less than 1% of people are born w/genetic conditions—the other 99% is created from lifestyle, behavior, & choices. Go, functional medicine, go!

Epigenetics

So, let's talk about our inner environment and the correlations between our thoughts, emotions, and our physical body. Our inner environment is affected by our emotional state which is a key factor in sending signals that cause genes to upregulate or down regulate. The environment signals the gene and the end product of an experience is called an E-motion-(energy in motion).

When someone has an emotionally charged experience it begins to send the chemical emotional signal to their body. And it's that chemical emotional signal that begins to change the persons state of being.

The person's body and brain are now effectively operating in the past as that event has changed them biologically. What happens to most people is that they begin to create beliefs from their past experiences.



Trauma influencing gene expression



Highly charged emotional events can signal genes that begin to cause the body to change.

If people are living in the routine of the predictable future, or their memories associated to the emotions of their past experiences—they can't think or even to a greater degree, how they feel about those series of events in their lives—that routine has begun to influence their gene expression.

Why? Because there is no new information coming in from the environment. The repetitive negative thoughts in their thinking lead to self-limiting beliefs, the toxic emotions that they continue to feel lead to repetitive patterns—constantly sending the same information to the genes over and over again.

Trauma influencing gene expression



Once the gene has been signaled, and the person is constantly living out of homeostasis or out of balance—that imbalance becomes their new normal—and now the internal environment, the body is sending specific signals to the cells.

The cells are getting the same instructions. The same instructions produce the same proteins. The person begins to experience, ill health or dis-ease within the body, or a dissonance in the frequency and they come see you.



Quantum Healing

When you have an internal experience in your mind that carries an amplitude of energy, that's greater than the hardwired programs in your brain, and the emotional conditioning in your body—then you will become biologically changed for better or for worse. It's your choice how you react to the experience—positively or negatively. Emotional states change the internal mapping of your brain.

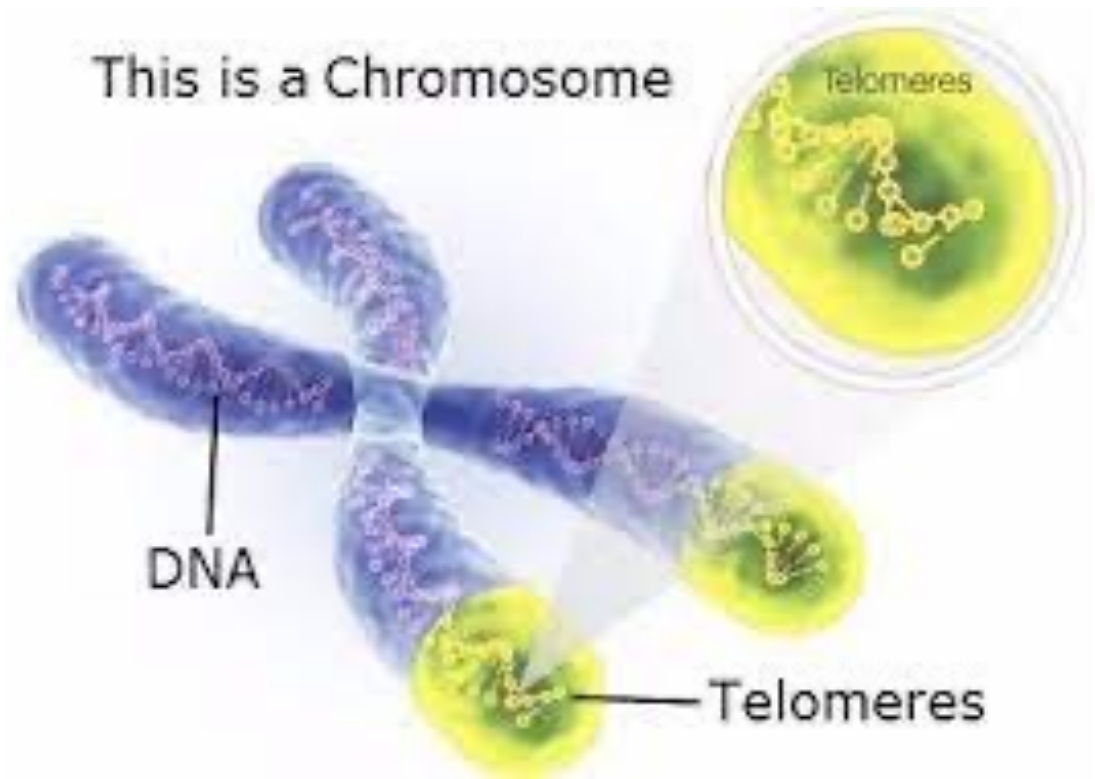
Your biology literally changes, or better yet, the past no longer exists. In essence you rewrite a new pattern, new information comes into the body. Energy influencing matter is a quantum phenomenon. We are quantum healers.

Longevity

And for all you anti-aging, healthy aging, longevity enthusiasts out there...you can extend your life by changing your internal state.

We can lengthen our telomeres with meditation and supplement support!

Biohackers! EnerDMG, SPMs, HA+, Prolean Greens, LivComplete.



Neuroscience Research



People with Type 2 diabetes were exposed to a very funny one-hour comedy show, where they laughed hard for an hour.

The experiment measured the before and after to see whether or not their genes up regulated.

Results—20 genes were upregulated just by people changing their mood!

So, by changing their internal state they were able to instruct new genes to up regulate and make new healthy proteins!

Prostate Cancer



November

Prostate Cancer
Awareness
Month

Studies out of UCLA have shown that men with prostate cancer were able to upregulate new genes for health and down regulate those genes for disease by meditating daily for 60 days.

Not only that, but they also lengthened their telomeres and increased their longevity (their biological age vs. their chronological age).



Zen is the word

Neuroscientist Dr. Joe Dispenza held a four-day meditation retreat. People who attended were able to reverse serious health conditions in just 4 days! 4 days?! Let's get zen my friends!

When people begin to heal their genes they are up regulating new genes and down regulating other genes that create disease or imbalance. Proving that we are our own genetic engineers and not our genes.

So, how can you holistically affect the internal state of your patients and help them fully heal their chronic conditions?

Soul Intelligence Method (#SQ)

The SOUL INTELLIGENCE™ Method is a revolutionary healing system that gets to the root cause of chronic illness by addressing what's stuck and what energy is not in motion.

E-motion is energy in motion, and when energy is not in motion, that's when the trouble starts.

With my bioenergetic therapy, you can release physical, emotional, and mental tension that is truly the root cause of most of our problems.

Improve your patient outcomes and increase your practice profits with this new revolutionary modality.



Soul Intelligence Method (#SQ)

What makes the SOUL INTELLIGENCE™ Method different from other healing approaches is that it requires zero compliance for your patients.

They only need to show up and receive the healing, without reliving traumatic events of the past. (In-person or via Zoom!)

This makes it a more accessible and a less invasive option for those who may be hesitant to try other approaches.

It's like reiki on steroids—or at least a steroid bridge, or a very specific form of prayer.



SOUL INTELLIGENCE™ METHOD

#SQ

If you're a busy healthcare professional already running a full practice and don't have the time to learn another modality—consider investing in a staff member who can learn the method and become certified.

If you're a doctor or healthcare professional seeking another revenue stream without doing the work yourself, I can connect you with certified practitioners who can do the work FOR YOU, while you get a commission.

The SOUL INTELLIGENCE™ Method offers you transformative power that has helped countless individuals achieve lasting healing and transformation.